

Protractors

- 360° Measuring range (4x90°)
- Alternative reference
- Simple calibration

PRO 360



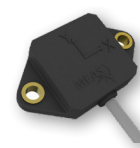
Product code	Measuring range	Typ. accuracy	Resolution	Repeatability	Working temperature	Output signal	Supply
PRO360	360°	± 0,1°	0,1°	0,1°	-5 to +50°C	n.a.	9V battery 500h
PRO3600	360°	± 0,05°	0,01°	0,05°	-5 to +50°C	Rs232	9V battery 500h

Compact Inclinometers

- Compact design
- Good performance
- Competitively priced

100105-01 digital

DOG2



Product code	Measuring range	Typ. accuracy	Resolution	Time constant	Working temperature	Output signal	Supply
100010-02 ratiometric	± 60°	± 0,25% FSO	0,001°	0,3 s	-40° to +85°C	Ratiometric	5-16VDC regulated
100013-01 analog	± 60°	± 0,25% FSO	0,001°	0,3 s	-40° to +85°C	-12 to +12VDC	+/-8VDC to +/- 20 VDC
100105-01 digital	± 60°	± 0,25% FSO	0,001°	0,3 s	-40° to +85°C	PWM/ TTL	5 VDC regulated
DOG2	±25°, ±45° or ±90°	0.15° at T=+25°C	12-bit	50~100 Hz Refresh rate	-40°C to +85°C	0.5 ~ 4.5V	8 ~ 30V (5VDC on request)

Industrial Inclinometers

- Up to 240° measuring range
- Single or dual axis (V-series)
- Extremely robust models to IP68
- High resolution

IT9000

V-inclinometer

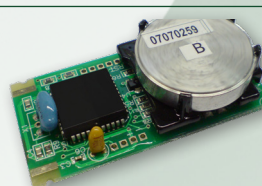


Product Code	Measuring range	Accuracy	Resolution	Vibration proof	Housing	Working temperature	Output signal	Supply
IT9000	240°	± 1% (opt:± 0,5%)	Essentially infinite	up to 10G at 2000Hz max	IP67/opt. IP68	-34° to +90°C	Voltage divider, 4-20mA, RS232	8-40VDC
V-inclinometer	+/-5° +/-15° and +/-45°	0.08°/ 0.15° / 0.9°	to 0.001°		IP65	0 to +70°C	+/-2VDC, Ratiometric, 4...20mA	+12...+24VDC

ISU - Module

- 360° Measuring range
- 3 accuracy versions
- Good accuracy over full range

ISU



Measuring range	Resolution	Accuracy	Repeatability	Angle output rate	Working temperature	Output signal	Supply
360°	± 0,005°	± 0,05°, ± 0,1°, ± 0,2°	± 0,05°, ± 0,1°, ± 0,2°	533 msec	-30° to +55°C	RS232, PWM,	5 VDC